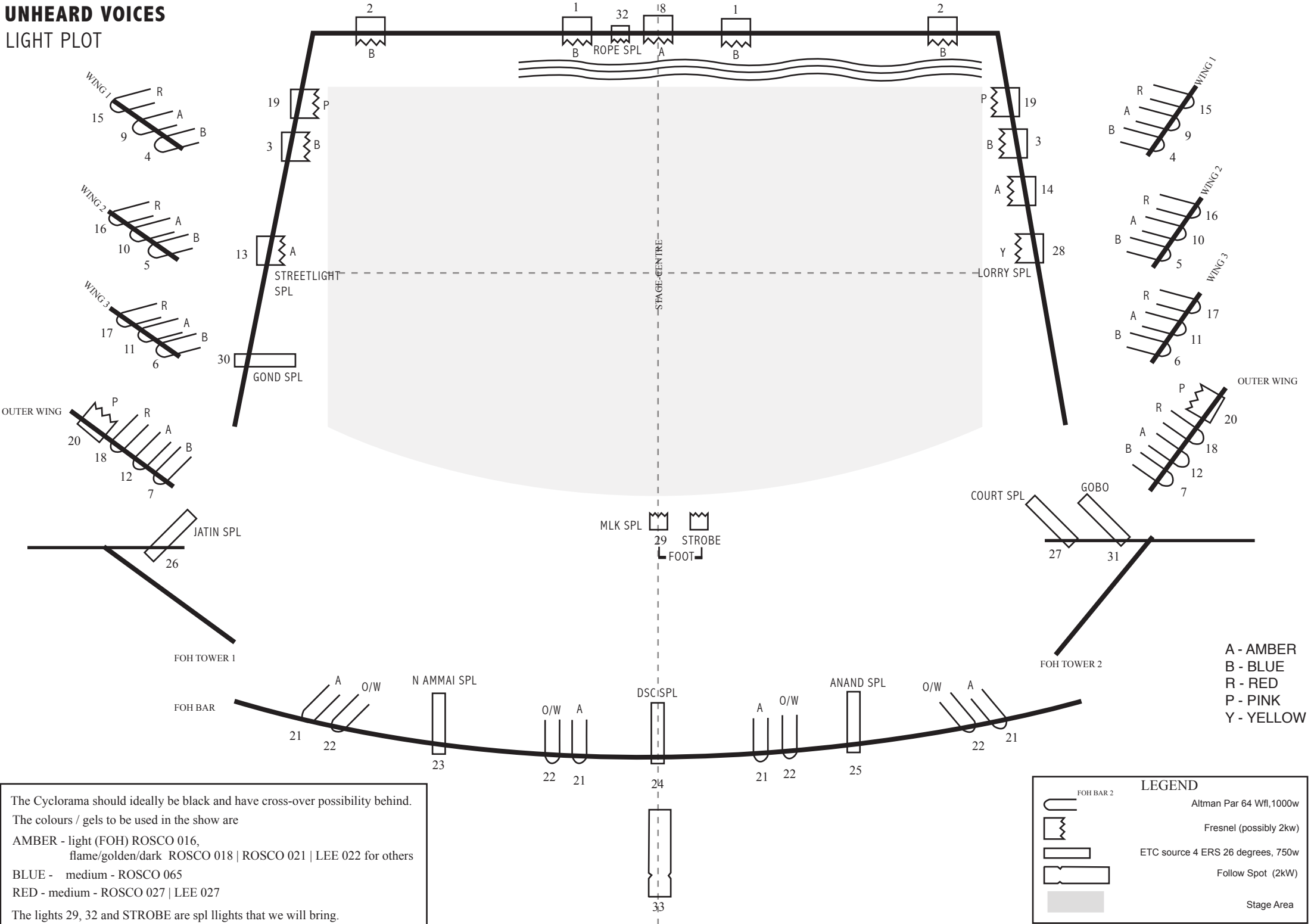


UNHEARD VOICES

LIGHT PLOT



The Cyclorama should ideally be black and have cross-over possibility behind.
 The colours / gels to be used in the show are
 AMBER - light (FOH) ROSCO 016,
 flame/golden/dark ROSCO 018 | ROSCO 021 | LEE 022 for others
 BLUE - medium - ROSCO 065
 RED - medium - ROSCO 027 | LEE 027
 The lights 29, 32 and STROBE are spl lights that we will bring.

LEGEND

- FOH BAR 2
- Altman Par 64 Wfl, 1000w
- Fresnel (possibly 2kw)
- ETC source 4 ERS 26 degrees, 750w
- Follow Spot (2kW)
- Stage Area

A - AMBER
 B - BLUE
 R - RED
 P - PINK
 Y - YELLOW